

# 专车专用电喇叭 与原车配套

Special electric horn for car,  
Can be matched with the original car



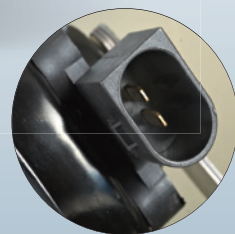
分贝 Decibel : 113dB  
电压 Voltage : DC12V  
频率 Frequency : H 510 L 410

**适用车型：保时捷·卡宴 (15-17)**

Applicable models: Porsche Cayenne (15-17)

H 7P5.951.184F  
6 033 FB6 167

L 7P5.951.183F  
6 033 FB6 166



# 专车专用电喇叭 与原车配套

Special electric horn for car,  
Can be matched with the original car



分贝 Decibel : 113dB  
电压 Voltage : DC12V  
频率 Frequency : H 510 L 410

**适用车型：通用型**

Applicable models: Universal

H/L 2 0 7 5 8 4 5 6



# 专车专用电喇叭 与原车配套

Special electric horn for car,  
Can be matched with the original car



分贝 Decibel : 113dB  
电压 Voltage : DC12V  
频率 Frequency : H 510 L 410

**适用车型：奔驰 ML/C 级老款**

Applicable models: Mercedes-Benz ML/C-class old models  
ML: 300 \ ML320 \ ML350 \ ML500

L 204 542 0420 H 204 542 0520



# 专车专用电喇叭 与原车配套

Special electric horn for car,  
Can be matched with the original car



分贝 Decibel : 113dB

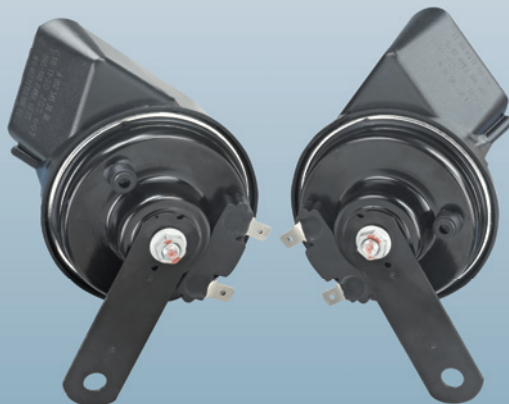
电压 Voltage : DC12V

频率 Frequency : H 510 L 410

适用车型 : 奔驰通用

Applicable models: Mercedes-Benz General

L A203 542 0220 H 203 542 0120



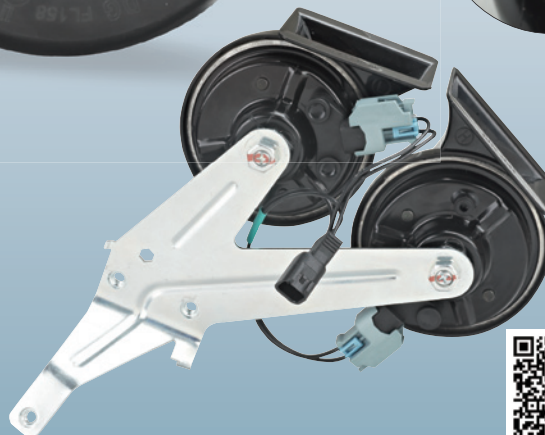
# 专车专用电喇叭 与原车配套

Special electric horn for car,  
Can be matched with the original car



分贝 Decibel : 113dB  
电压 Voltage : DC12V  
频率 Frequency : H 510 L 410

**适用车型：凯迪拉克 CTS**  
Applicable models: Cadillac CTS  
H/L 0926-006-3

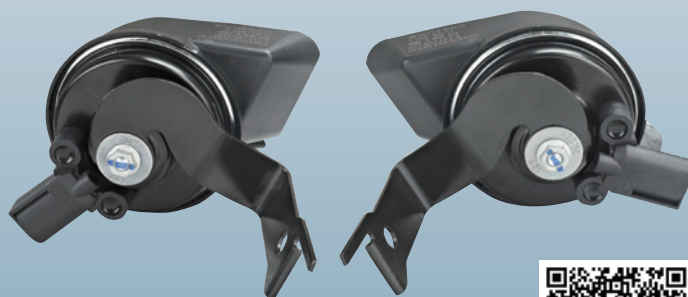


# 专车专用电喇叭 与原车配套

Special electric horn for car,  
Can be matched with the original car



分贝 Decibel : 113dB  
电压 Voltage : DC12V  
频率 Frequency : H 510 L 410



**适用车型：保时捷·帕拉梅拉**

Applicable models: Porsche. Palamera

H 970 635 027 01    L 213 542 2300  
6 033 FB6 559      6 033 FB6 558



# 专车专用电喇叭 与原车配套

Special electric horn for car,  
Can be matched with the original car



分贝 Decibel : 113dB

电压 Voltage : DC12V

频率 Frequency : H 510 L 410

适用车型：福特福克斯、蒙迪欧、致胜、嘉年华、  
翼虎、翼博、锐界

Applicable models: Ford Focus, Mondeo, Winning,  
Carnival, Wing Tiger, Wing Bo, Sharp

H.L 6M5T-13A803-AC



# 专车专用电喇叭 与原车配套

Special electric horn for car,  
Can be matched with the original car



分贝 Decibel : 113dB

电压 Voltage : DC12V

频率 Frequency : H 510 L 410

**适用车型：新宝马 7 系、6 系、5 系、3 系、2 系  
1 系、X1、X3、X5、X6**

**Applicable models: Ford Focus, Mondeo, Winning,  
Carnival, Wing Tiger, Wing Bo, Sharp**

**L 61 337 293 826 H 61 337 293 826**



# 专车专用电喇叭 与原车配套

Special electric horn for car,  
Can be matched with the original car



分贝 Decibel : 113dB

电压 Voltage : DC12V

频率 Frequency : H 510 L 410

适用车型：宝马、荣威、老款 7 系、5 系、3 系、  
荣威 350/550/750、名爵 MG6/MG7、MINI、路虎

Applicable models: BMW, Roewe, old 7 series, 5 series,  
3 series, Roewe 350/550/750, MG6/MG7, MINI, Land Rover

L 11 25 7 561 848 H 11 25 7 561 848



# 专车专用电喇叭 与原车配套

Special electric horn for car,  
Can be matched with the original car



分贝 Decibel : 113dB  
电压 Voltage : DC12V  
频率 Frequency : H 510 L 410

**适用车型：奔驰**  
**Applicable models: Mercedes-Benz**  
L 253 542 1200  
H 253 542 1300



# 专车专用电喇叭 与原车配套

Special electric horn for car,  
Can be matched with the original car



分贝 Decibel : 113dB

电压 Voltage : DC12V

频率 Frequency : H 510 L 410

**适用车型：新现代、新起亚**

**Applicable models: New Hyundai, New Kia**

**L 96610-F0000 MAQ CC**

**H 96620-F0000 LK0 CC**



# 专车专用电喇叭 与原车配套

Special electric horn for car,  
Can be matched with the original car



分贝 Decibel : 113dB  
电压 Voltage : DC12V  
频率 Frequency : H 510 L 410

**适用车型：奔驰 C 级**  
**C180/C200/C250/280/C300**  
Applicable models: Mercedes-Benz C-class  
C180/C200/C250/280/C300  
L 205 542 1220      H 205 542 1320



# 专车专用电喇叭 与原车配套

Special electric horn for car,  
Can be matched with the original car



分贝 Decibel : 113dB

电压 Voltage : DC12V

频率 Frequency : H 510 L 410

适用车型：奥迪专用插头、A3、A4、A5、A6、  
A7、A8、Q3、Q5、Q7、TT、迈腾、速腾  
Applicable models: Audi dedicated plug, A3, A4,  
A5, A6, A7, A8, Q3, Q5, Q7, TT, Magotan, Sagitar

L 18G951 221

H 18G951 223



# 专车专用电喇叭 与原车配套

Special electric horn for car,  
Can be matched with the original car



分贝 Decibel : 113dB  
电压 Voltage : DC12V  
频率 Frequency : H 510 L 410



**适用车型：奔腾 B70**  
**Applicable models: Pentium B70**

**H 5EA0-66781**  
**L 5EA0-66791**



# 专车专用电喇叭 与原车配套

Special electric horn for car,  
Can be matched with the original car



分贝 Decibel : 113dB  
电压 Voltage : DC12V  
频率 Frequency : H 510 L 410

适用车型 : 大众四方插头、红旗、奥迪、A6、  
A4、A3

Applicable models: Volkswagen, Red Flag,  
Audi, A6, A4, A3



# 专车专用电喇叭 与原车配套

Special electric horn for car,  
Can be matched with the original car



分贝 Decibel : 113dB

电压 Voltage : DC12V

频率 Frequency : H 510 L 410

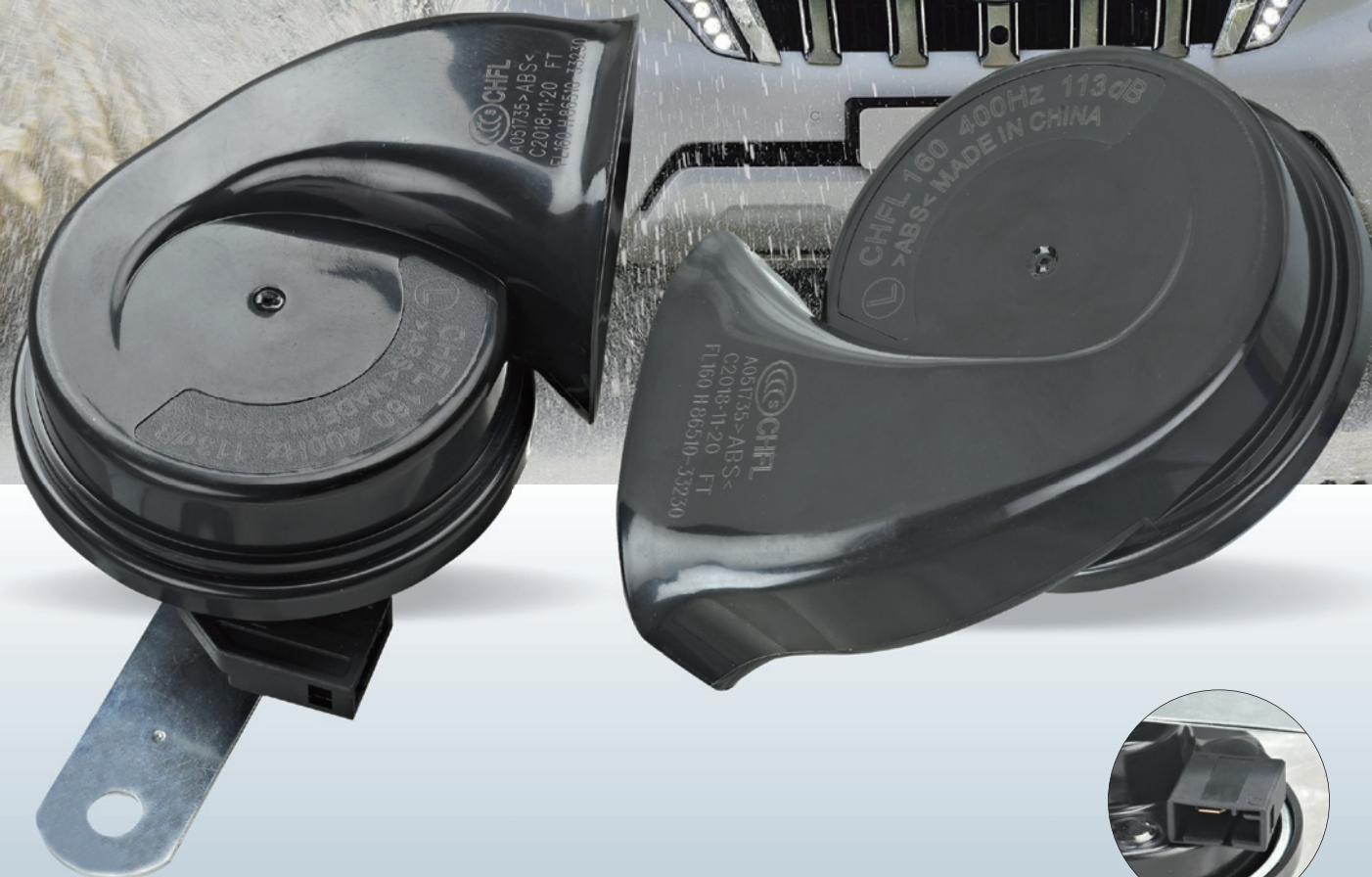


**适用车型：奥迪通用、A3、A4、A5、A6、A7、A8、Q3、Q5、Q7、TT、迈腾、速腾**  
**Applicable models: Audi General, A3, A4, A5, A6, A7, A8, Q3, Q5, Q7, TT, Magotan, Sagitar**  
**L 18G951 221      H 18G951 223**

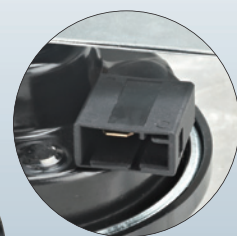


# 专车专用电喇叭 与原车配套

Special electric horn for car,  
Can be matched with the original car



分贝 Decibel : 113dB  
电压 Voltage : DC12V  
频率 Frequency : H 510 L 410



**适用车型：丰田系列**

**Applicable models: Toyota Series**

**L 86520-33170**

**H 86510-33230**



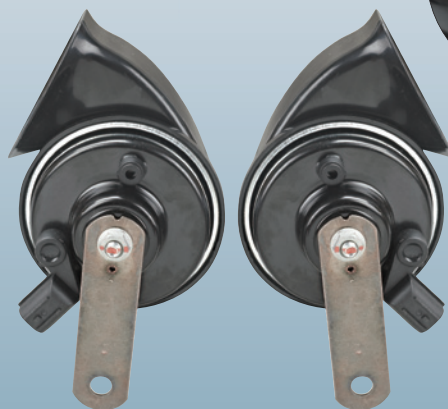
# 专车专用电喇叭 与原车配套

Special electric horn for car,  
Can be matched with the original car



分贝 Decibel : 113dB  
电压 Voltage : DC12V  
频率 Frequency : H 510 L 410

适用车型：本田系列  
Applicable models: Honda Series





# 专车专用电喇叭 与原车配套

Special electric horn for car,  
Can be matched with the original car



分贝 Decibel : 113dB

电压 Voltage : DC12V

频率 Frequency : H 510 L 410

适用车型 : 凯迪拉克 SRX  
Applicable models: Cadillac SRX

H/L 2 0 7 5 8 4 5 6



# 专车专用电喇叭 与原车配套

Special electric horn for car,  
Can be matched with the original car



分贝 Decibel : 113dB

电压 Voltage : DC12V

频率 Frequency : H 510 L 410

适用车型 : 途观、新帕萨特、朗逸、B5、大众系列

Applicable models: Tiguan, New Passat,  
LaVida, B5, Volkswagen Series

H DL135DK-LJ97A L DL135GK-LJ97



# 专车专用电喇叭 与原车配套

Special electric horn for car,  
Can be matched with the original car



分贝 Decibel : 113dB

电压 Voltage : DC12V

频率 Frequency : H 510 L 410

**适用车型：新君越、新君威、凯迪拉克 SRX、  
CTS、福克斯、蒙迪欧**

**Applicable models: New LaCrosse, New  
Regal, Cadillac SRX, CTS, Fox, Mondeo**

**H/L 22783140 DL138ID/IG-LJ94**



# 专车专用电喇叭 与原车配套

Special electric horn for car,  
Can be matched with the original car



分贝 Decibel : 113dB  
电压 Voltage : DC12V  
频率 Frequency : H 510 L 410

适用车型：蒙迪欧、福克斯、致胜、嘉年华、翼虎、翼博、锐界

Applicable models: Mondeo, Fox, winning, carnival, Wing Tiger, Wing Bo, Sharp  
H/L BT4Z-13832-A



# 专车专用电喇叭 与原车配套

Special electric horn for car,  
Can be matched with the original car



分贝 Decibel : 113dB

电压 Voltage : DC12V

频率 Frequency : H 510 L 410

适用车型: 马自达 M6、M5、M3、M2、昂克赛拉、睿翼、  
普力马、海马 323、劲翔、福美来、奔腾 B70

Applicable models: Mazda M6, M5, M3, M2, Angkesaila, Ruiyi,  
Premarin, Haima 323, Jinxiang, Familia, Pentium B70

H.L GP9A6679Y



# 专车专用电喇叭 与原车配套

Special electric horn for car,  
Can be matched with the original car



分贝 Decibel : 113dB

电压 Voltage : DC12V

频率 Frequency : H 510 L 410

**适用车型：新迈腾 B8L**

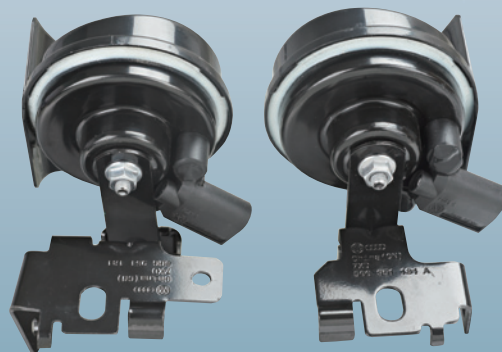
**Applicable models: New Magotan B8L**

**H 3GD 951 206B**

**L 3GD 951 206C**

**3QD 951 223A**

**3QD 951 221A**



# 专车专用电喇叭 与原车配套

Special electric horn for car,  
Can be matched with the original car



分贝 Decibel : 113dB  
电压 Voltage : DC12V  
频率 Frequency : H 510 L 410

适用车型 : 现代、起亚  
Applicable models: Hyundai, Kia



# 专车专用电喇叭 与原车配套

Special electric horn for car,  
Can be matched with the original car



分贝 Decibel : 113dB  
电压 Voltage : DC12V  
频率 Frequency : H 510 L 410



**适用车型：大众通用**

**Applicable models: Volkswagen General**



# 专车专用电喇叭 与原车配套

Special electric horn for car,  
Can be matched with the original car



分贝 Decibel : 113dB

电压 Voltage : DC12V

频率 Frequency : H 510 L 410

**适用车型：新爱丽舍、科雷傲、标志 301、  
2008 C3-XR**

**Applicable models: New Elysee, Koleo,  
Peugeot 301, 2008 C3-XR**



# 专车专用电喇叭 与原车配套

Special electric horn for car,  
Can be matched with the original car



分贝 Decibel : 113dB

电压 Voltage : DC12V

频率 Frequency : H 510 L 410

**适用车型 : 奔腾 B50**

**Applicable models: Pentium B50**

**H 5CAO-66790-A**

**L 5CAO-66780-A**



# 专车专用电喇叭 与原车配套

Special electric horn for car,  
Can be matched with the original car



分贝 Decibel : 113dB

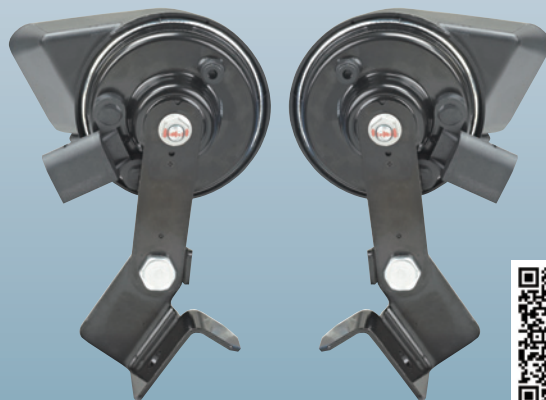
电压 Voltage : DC12V

频率 Frequency : H 510 L 410

适用车型 : 奔腾 X80

Applicable models: Pentium X80

H 5CAO-66790 L 5CAO-66780



# 专车专用电喇叭 与原车配套

Special electric horn for car,  
Can be matched with the original car



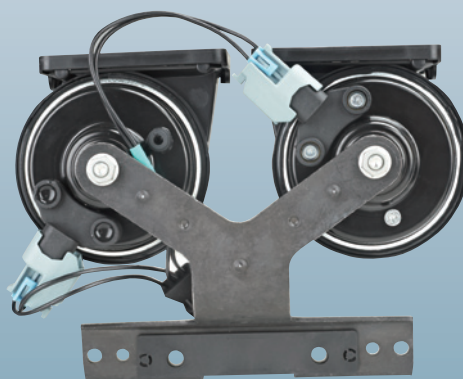
分贝 Decibel : 113dB

电压 Voltage : DC12V

频率 Frequency : H 510 L 410

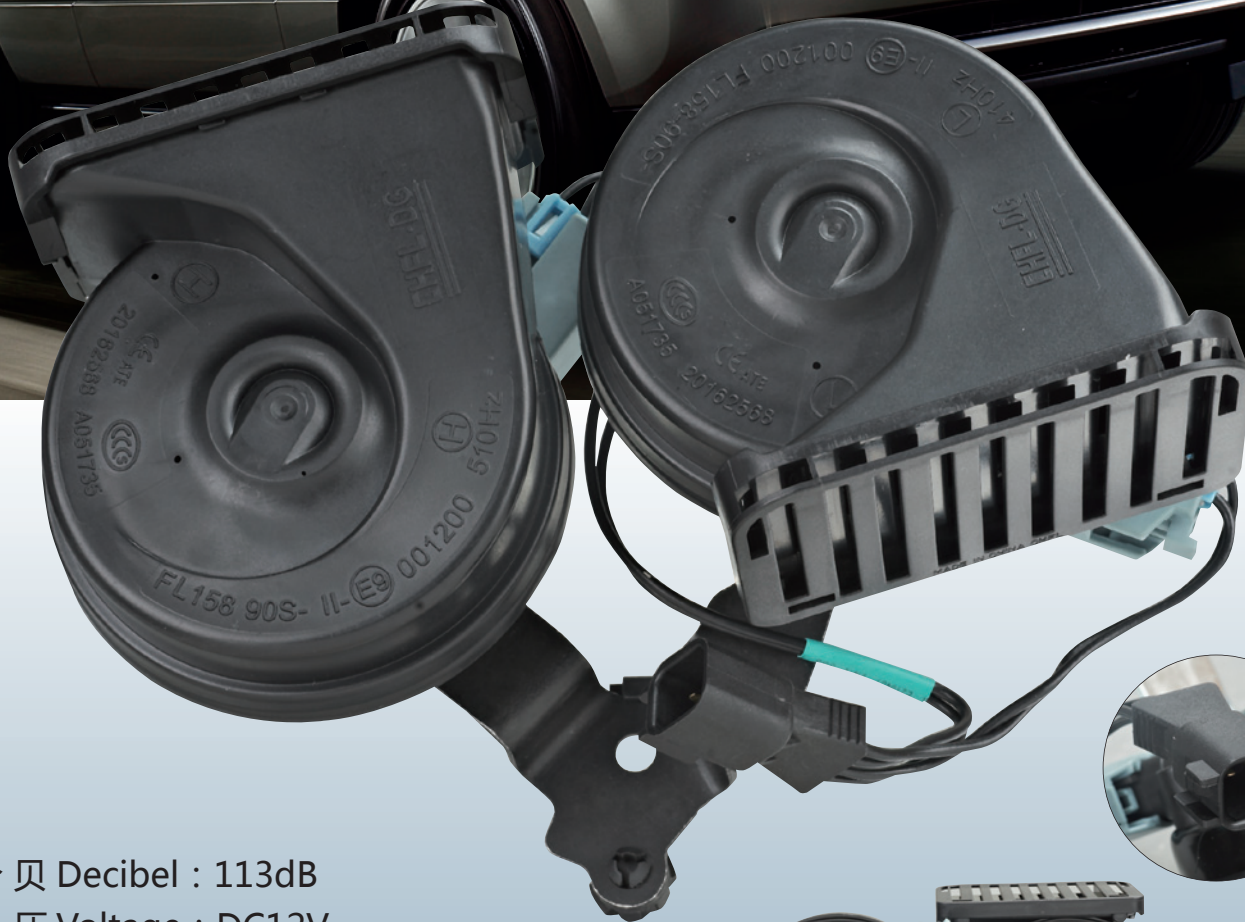
**适用车型：路虎揽胜（运动版）**  
Applicable models: Land Rover  
(Sports version)

LR 014560 B34SA 19 5 6J 0 1



# 专车专用电喇叭 与原车配套

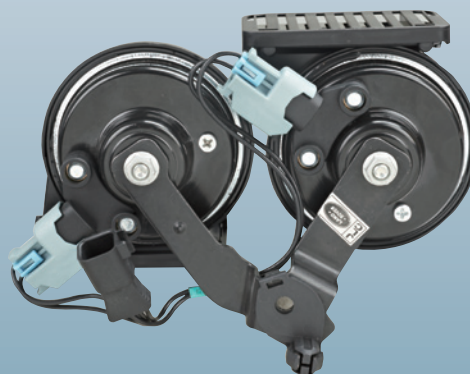
Special electric horn for car,  
Can be matched with the original car



分贝 Decibel : 113dB

电压 Voltage : DC12V

频率 Frequency : H 510 L 410



**适用车型：路虎揽胜（行政版）**

**Applicable models: Land Rover Range Rover  
(Administration Edition)**

**LR 108993. CPLA-13A803-AC B34SA 23 4 8B 1 4**

